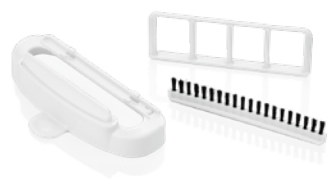


### 3-IN-1 ATTACHMENT

Removable attachments make professional results fast and simple.

- Silicone Band pulls fabric taut for easy steaming and wrinkle removal.
- Bristle Brush loosens fibers for faster steam penetration.
- Delicate Fabric Spacer protects fragile fabrics and trims while steaming.



**CAUTION: MAKE SURE YOUR STEAMER IS OFF AND HAS COOLED BEFORE ADDING OR REMOVING ATTACHMENTS.**

## IMPORTANT SAFETY INSTRUCTIONS

When using electrical appliances, especially when children are present, basic safety precautions should always be taken, including the following:

### READ ALL INSTRUCTIONS BEFORE USING

**DANGER** — Any appliance is electrically live even when the switch is off.

To reduce the risk of death by electric shock:

1. **Always unplug appliance immediately after using.**
2. Do not place or store appliance where it can fall or be pulled into a tub or sink.
3. Do not place in, or drop into water or other liquids.
4. If an appliance falls into water, unplug it immediately. **Do not reach into the water.**

**WARNING** — To reduce the risk of burns, electrocution, fire, or injury to persons:

1. **This appliance should never be left unattended when plugged in.**
2. This appliance should not be used by, on, or near children or individuals with certain disabilities. Unsupervised use could result in fire or personal injury.
3. Use this appliance only for its intended use as described in this manual. Do not use attachments not recommended by the

### CLEANING AND STORING

1. Turn the ON/OFF switch to the OFF position and unplug from the power source.
2. Wait for the steamer to cool completely for at least 30 minutes.
3. Remove the water tank from unit, open bottom cover and empty unused contents. Allow to air dry.
4. Collapse telescopic hanger pole.
5. Replace water tank.
6. Store the unit.

### DECALCIFICATION

If the appliance begins to produce steam more slowly than usual or stops producing steam and then starts again, you may need to decalcify your steamer. Decalcification refers to removing the calcium deposits that form over time on the metal parts of the steamer. For best performance from the steamer, decalcify the unit once a month. The frequency depends upon how often you use the steamer. To decalcify, add a solution of 1/3 white vinegar and 2/3 distilled water in the water tank. Place the water tank in the unit. Plug the unit into electrical outlet. Turn to the ON position and run until half the amount has steamed (1 liter). Turn the unit to the OFF position, unplug from electrical outlet, and allow to sit for 30 minutes.

Repeat the above procedure as many times as necessary until a normal steam rate returns, usually 2–3 times. With each

manufacturer.

4. **Never operate this appliance if it has a damaged cord or plug, if it is not working properly, or if it has been dropped or damaged, or dropped into water. Do not attempt to repair the appliance. Incorrect reassembly or repair could cause a risk of fire, electric shock, or injury to persons when the appliance is used. Return the appliance to an authorized service center for examination and repair.**
5. Keep the cord away from heated surfaces. Do not allow cord to touch heated surfaces. Do not pull or twist cord. Let appliance cool completely before putting away.
6. This appliance has a polarized plug (one blade is wider than the other). As a safety feature, this plug will fit in a polarized outlet only one way. If the plug does not fit fully in the outlet, reverse the plug. If it still does not fit, contact a qualified electrician. Do not attempt to defeat this safety feature.
7. Never drop or insert any object into any opening or hose.
8. Do not use outdoors or operate where aerosol (spray) products are being used or where oxygen is being administered.
9. Do not use an extension cord to operate appliance.
10. Surfaces of this appliance may be hot when in use. Do not let heated surfaces touch eyes or skin.
11. Do not place the steam nozzle directly on any surface or on the appliance power

repeated cycle, use a fresh solution of vinegar and distilled water. Run one cycle of fresh, distilled water without vinegar through the unit at the completion of decalcification before using the unit again to steam garments.

### HOW TO STEAM

Grasp the handle of the steam nozzle with the soleplate facing away from you. Slowly move the nozzle onto the fabric for steaming. Use steam to freshen and help remove odors. Use the soleplate to help remove wrinkles in thicker, heavier and less delicate fabric.

**NOTE:** Test fabric for color fastness in an inconspicuous spot. Drape linens, towels, handkerchiefs, and napkins over a rod or place on a towel rack. Heavier fabrics may require repeated steaming. Repeats as necessary. With practice, you will gain speed and efficiency. You will soon learn which fabric require multiple steam applications.

**Do not directly touch velvet, silk or other delicate fabrics with the steam head. Use extra caution when steaming delicate fabrics.**

### TO STEAM DRAPES

Wash and dry drapes as directed, according to fabric type. Rehang drapes and steam drapes when they are in place.

**CAUTION: Soleplate will be hot when in use. Avoid prolonged contact. Keep steam head moving while steaming your garment.**

### TROUBLESHOOTING THE STEAMER

- **PROBLEM** - Steamer fails to heat  
**CAUSE** - Steamer not plugged in  
**SOLUTION** - Plug into electrical outlet
- **PROBLEM** - No steam  
**CAUSE** - Water level is low  
**SOLUTION** - Turn On/Off switch off and refill water tank
- **PROBLEM** - Poor steam performance  
**CAUSE** - Sediment in tank  
**SOLUTION** - Decalcify reservoir and water tank. See decalcification instructions.
- **PROBLEM** -Dye on steam nozzle  
**CAUSE** - Fabric not colorfast / Touching steam nozzle to fabric  
**SOLUTION** - Move steam nozzle 1/2 inch away from fabric during use. Clean steam nozzle with household cleaner and rinse with soap and water
- **PROBLEM** - Discoloring of fabric  
**CAUSE** - Dye on surface of fabric needs specialty treatment and cleaning / Fabric not suitable for steaming  
**SOLUTION** - Some custom specialty fabrics have dyes that are NOT COLORFAST and are not suitable for steaming. Test fabric for colorfastness in an inconspicuous spot before steaming.

**NOTE: Amounts of chemicals in water will vary in different areas. To ensure continued operation of the steamer, use only distilled water. Never store without cleaning and removing excess water from the reservoir and water tank.**

cord while it is hot or plugged in. Use the stand provided.

12. Unplug this appliance before filling or emptying. Do not overfill.
13. While emitting steam, this appliance may cause burns if it is used too close to the skin, scalp or eyes, or if it is used incorrectly. To reduce the risk of contact with hot water discharging from steam vents, test appliance before each use by holding it away from body.
14. Do not operate steamer without properly filling the water tank with distilled water.
15. Always keep the hose and nozzle elevated above the water tank.
16. Never yank cord to disconnect from outlet. Instead, grasp plug and pull to disconnect.
17. Burns could occur from touching hot metal parts, hot water, or steam. Use care when removing water tank or when you turn a steam appliance upside down – there may be hot water in reservoir.
18. To reduce likelihood of circuit overload, do not operate another high-wattage appliance on the same circuit at the same time.
19. If an extension cord is absolutely necessary, a 15 ampere rated cord should be used. Cords rated for less amperage may overheat. Care should be taken to arrange the cord so that it can not be pulled or tripped over.
20. Always remove the water tank from the appliance before filling it with distilled water.

21. When changing attachments, please be sure the unit is off and no steam is being released in order to avoid contact with hot water.
22. Use caution when changing attachments, as there may be hot water from condensation. Ensure the attachments are dry or cooled off, to avoid contact with hot water.
23. Never steam clothes that you or someone else are wearing.
24. Do not hold hand in front of steam.

## SAVE THESE INSTRUCTIONS

### FOR HOUSEHOLD USE ONLY

#### UNPACKING INSTRUCTIONS

Place the box on a large, sturdy, flat surface. Carefully remove the appliance from the packing material. Keep all plastic bags away from children. Some assembly required.

#### STEAMER ASSEMBLY

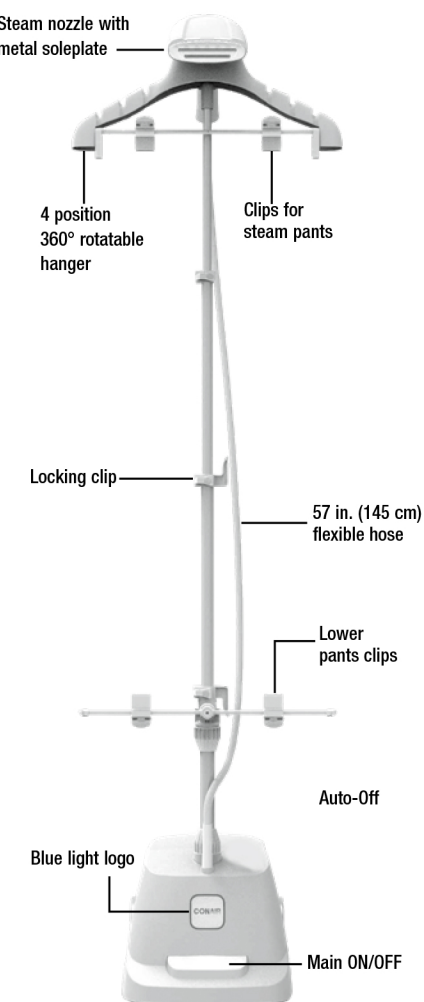
##### Attaching the Telescopic Pole and Rotating Hanger

1. Loosen the pole locking nut clockwise.
2. Insert the telescopic pole into the opening of the locking nut. Press down firmly to ensure the pole has reached the bottom. Turning counter-clockwise to fasten the locking nut.
3. Full extend the telescopic pole, making sure to lock the pole upright by engaging

the three clips.

4. Place the steam nozzle onto the cradle.
5. Hang your garment in preparation for steaming away wrinkles.
6. When you are ready to steam, fill the water tank by turning out the bottom screw cap with distilled water.
7. Plug the steamer unit into standard 125V AC power outlet.
8. The bristle brush and silicone band attachments easily snap over the soleplate for use. We recommend using the silicone band attachment when steaming delicate fabrics. **See instruction booklet "Attachment" section.**

### GET TO KNOW YOUR STEAMER



### LIMITED ONE YEAR WARRANTY (U.S. AND CANADA ONLY)

Conair will repair or replace (at our option) your unit free of charge for 12 months from the date of purchase if the appliance is defective in workmanship or materials.

To obtain service under this warranty, return the defective product to the service centre listed below, together with your purchase receipt.

In the absence of a purchase receipt, the warranty period shall be 12 months from the date of manufacture

**ANY IMPLIED WARRANTIES, INCLUDING BUT NOT LIMITED TO THE IMPLIED WARRANTY OF MERCHANTABILITY AND FITNESS FOR A PARTICULAR PURPOSE, SHALL BE LIMITED IN DURATION TO THE 12-MONTH DURATION OF THIS WRITTEN, LIMITED WARRANTY.**

**IN NO EVENT SHALL CONAIR BE LIABLE FOR ANY SPECIAL, INCIDENTAL, OR CONSEQUENTIAL DAMAGES FOR BREACH OF THIS OR ANY OTHER WARRANTY, EXPRESS OR IMPLIED, WHATSOEVER.**

This warranty gives you specific legal rights, and you may also have other rights, which vary from province to province.

#### SERVICE CENTRE:

Conair Consumer Products ULC  
100 Conair Parkway,  
Woodbridge, ON L4H 0L2.  
1-855-926-6247

©2021 Conair Consumer Products ULC  
www.conaircanada.ca  
Consumer Call Centre E-mail :  
Consumer\_Canada@Conair.com

20CN076741

IB-17115

**EXTREMESTEAM.**

PROFESSIONAL UPRIGHT  
GARMENT STEAMER

#### Instructions for Use

For your safety and continued enjoyment of this product, always read the instruction book carefully before using.



### Have a Question?

Please do not return this product to the retailer.

#### Call Us First!

Our customer service and product experts are ready to answer ALL your questions.

Please call our TOLL-FREE customer service number at: 1-855-926-6247 or visit us online at [www.conaircanada.ca](http://www.conaircanada.ca)

**CONAIR**

Model GS121C

## OPERATING INSTRUCTIONS

### FILLING THE WATER TANK (PRIOR TO PLUGGING IN THE APPLIANCE)

Remove the water tank by gripping the recessed cave of tank. Upside down the tank and unscrew the bottom screw cap. Fill reservoir with distilled water to desired level. Fasten the screw cap. (An anti-calcium cartridge is attached to the screw cap, it is replaceable after a period time of use Fig 4)

Position the water tank on the base and make certain it is seated properly in the unit.

**DO NOT FILL THE TANK WITH HOT WATER. DISTILLED OR FILTERED WATER IS BEST.**

### TURNING STEAMER ON

1. Remove water tank from base, fill with distilled water, and PRESS tank down into the main unit.
2. Press the foot activated power switch one to turn the unit ON.(Fig.1)
3. While water is heating, the blue light logo will blink.
4. Once the blue light is steady, the unit is ready to use.
5. Press the steam button on the rear of steam head to release steam at high(l) or low(l) velocity steam. (Fig.2)
6. When water level run out of water, switch the steam off and refill water. Prefer to refill water at minimum water level line.



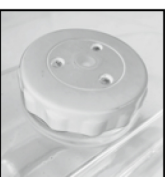
(Fig. 1)



(Fig. 2)



(Fig. 3)



(Fig. 4)